

# MULTI SPHERE ROUND PAVEMENT MARKER

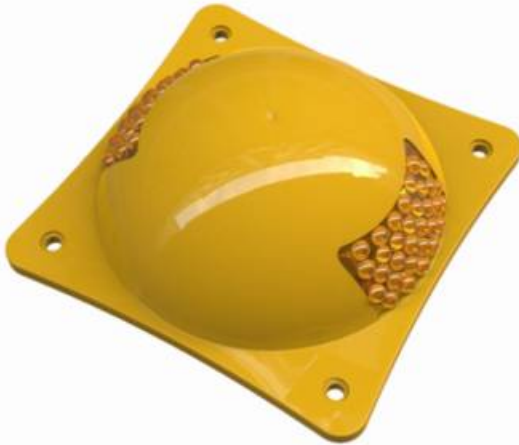
Code: BY-ES

## WHAT'S A MULTI-SPHERE PAVEMENT MARKER?

Horizontal road signage used on roads, highways or streets that work as speed bump, stop or to delineate zones.

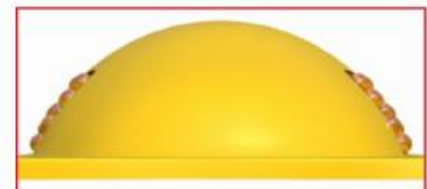
Optimize road transit and promote traffic safety.

Guide vehicle flow, providing safety in vicinity of zones that can be dangerous as bridges, tunnels, slopes or curves, also used to delineate lanes.



## FEATURES

- Designed to delimit and channelize vehicles, it offers low friction to tires.
- Non-deformable body of ABS.
- High resistance and stability of materials, even in extreme temperatures.
- UV protection.
- Great visibility during day and night thanks to the 32 high retro-reflection spheres of metallized polycarbonate on each face; can be one or two faces.
- Ideal for heavy transit.
- Adaptable to any pavement type.
- Easy installation with 4 boreholes (nails included).



# MULTI SPHERE ROUND PAVEMENT MARKER

Código: BY-ES

## MEASUREMENTS

Dimensions and other measures are nominal and may vary by +/- 2%.

**Manufactured in**

- ABS

**Measures**

- Length: 7.6 in x 7.6 in
- Height: 2.7 in
- Tight: 7.2 in
- Color: Yellow or green

**Color**

**Compressive Strength (load)**

- 26,000 kg/cm<sup>2</sup>  
(369,806 lb/in<sup>2</sup>)

**Impact Strength  
(ASTM D-256C IZOD) -18° -23°C**

- 10.68 j/m

**Fill**

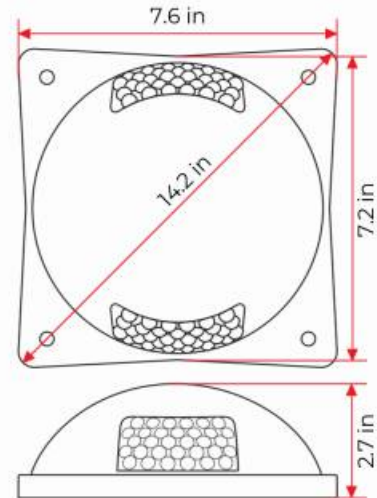
- Epoxy resin with silica sand filler

**Reflective surface per face**

- 40 cm<sup>2</sup>  
(6.2 in<sup>2</sup>)

**Effective contact surface**

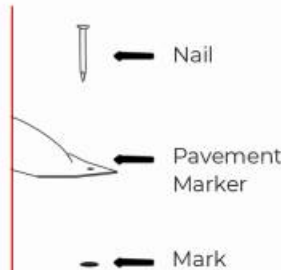
- 376.36 cm<sup>2</sup>  
(58.33 in<sup>2</sup>)



## INSTALLATION

First, prepare the surface which must be clean and dry; then, mark the distribution of each pavement marker for its installation on:

- **Asphalt:** Mark the four boreholes, place the pavement marker and start hitting to nail them. Secondly, apply epoxy resin on base, if desired. Finally, make sure to avoid the damage of pavement marker when hitting the nails, this is how should be installed, four nails of ¼" x 3".
- **Hydraulic Concrete:** Mark on concrete with a 3/16" to a 3" depth to insert the 4 nails of ¼" x 3" by hitting them; apply epoxy resin on base for a greater reinforcement, if desired.



**How to prepare epoxy resin:**

1. Compound equal amounts of "a" + "b" substances.
2. Stir until a homogeneous mixture is obtained.
3. Once you are done, dispose of the epoxy resin residuals (it is for single-use only).