

RAISED PAVEMENT MARKER 100

Code: BACI ES-100

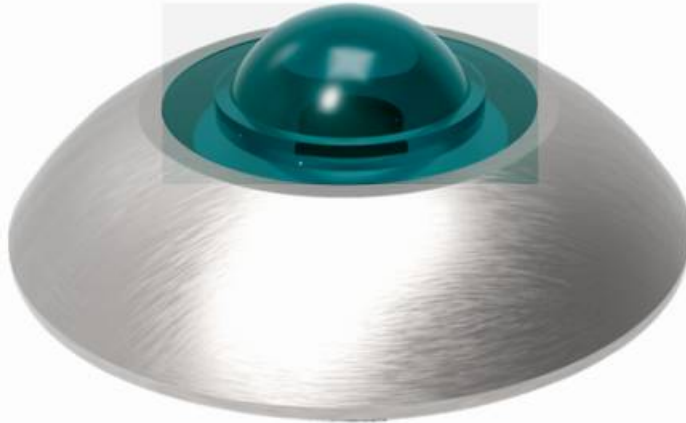
WHAT'S PAVEMENT MARKER 100?

Traffic buttons or cat eyes, planned properly to maintain safety on asphalt layer, due is complemented by a glass sphere that helps to a better luminosity at long distances.

Ideal to confine and delineate lanes to place on all kind of roads.

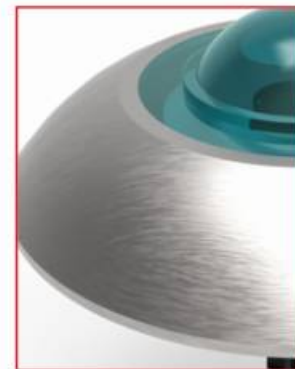
Placed on pavement, work to channelize circulation of vehicles, indicate movements, oblige motorists to reduce their speed, delineate lanes and other functions; useful and convenient due it doesn't distract motorist, but call their attention with the reflective sphere.

Reflectivity is provided by sphere; giving more visibility during night with headlights of vehicles. Great device in pedestrian zones, crossings, turns, etc.



FEATURES

- Molded in stainless steel in a single piece.
- Body with fill, made of materials that provide high resistance to shocks and impacts.
- Work as speed bump in pedestrian crossings, school zones and delineate lanes.
- Glass sphere with thermal type tempering, is 100% safe; harmless pieces, if breaks.
- Thanks to their manufacturing materials and methods, has a long durability.
- Option to include a bolt on lower part for an optimal fastening on asphalt surface.
- ABS bolt doesn't break if detached from the device, just deteriorates.
- Easy to install, it doesn't need subsequent maintenance.
- Usually, the installation of the device requires epoxy glue; this distinguishes for its high resistance to temperature, physical and chemical agents, excellent adhesion and long durability result.

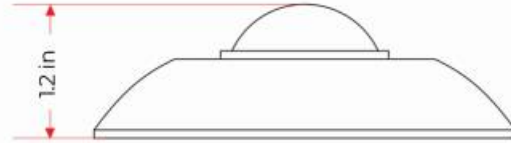


RAISED PAVEMENT MARKER 100

Code: BACI ES-100

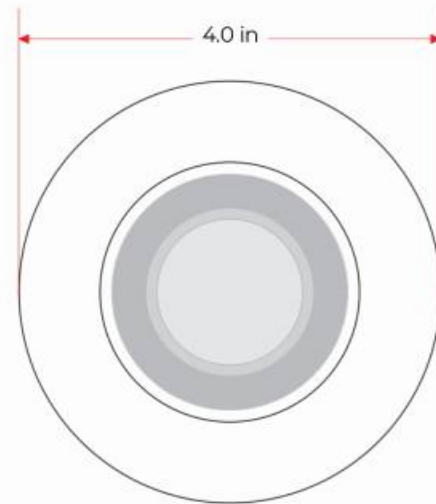
MEASUREMENTS

Dimensions and other measures are nominal and may vary by +/- 2%.



RAISED PAVEMENT MARKER

Die-Cut in	<ul style="list-style-type: none"> Stainless Steel Type 430 Nikel-Chromium alloy
Sheet Gauge Size	<ul style="list-style-type: none"> 18
Finish	<ul style="list-style-type: none"> 2B finish
Measures	<ul style="list-style-type: none"> Diameter: 4.0 in Height: 1.2 in
Approx. Weight	<ul style="list-style-type: none"> 28 gr (0.9 oz)
Color	<ul style="list-style-type: none"> Natural
Pressure Resistance	<ul style="list-style-type: none"> + 7,500 kg/cm² (106,675 lb/in²)
Resistencia del acero	<ul style="list-style-type: none"> 450 mega pascals
Optional Bolt	<ul style="list-style-type: none"> A36 Steel with 3 spaces



SPHERE

Manufactured in	<ul style="list-style-type: none"> Silicon glass with thermal type tempering 	Hardness	<ul style="list-style-type: none"> 6 or 7 mohs scale
Measures	<ul style="list-style-type: none"> Diameter 57 mm Height: 28 mm 	Poisson's Ratio	<ul style="list-style-type: none"> Vary between 0.22 and 0.23
Presentation Color	<ul style="list-style-type: none"> Natural 	Compressive Strength	<ul style="list-style-type: none"> Greater than 10,000 kg/cm² (142,233 lb/in²)
Density	<ul style="list-style-type: none"> 2500 kg /m³ (156 lb/ft³) 	Working Modulus	<ul style="list-style-type: none"> 500 kg/cm²
Softening Point	<ul style="list-style-type: none"> Approx. 730 °C. (1346 °F) 	Modulus of Rupture	<ul style="list-style-type: none"> 850 kg/cm² (12,089 lb/in²)
Thermal Conductivity	<ul style="list-style-type: none"> 1.05 W/mK 	Tensile Strength	<ul style="list-style-type: none"> 300 & 700 k/cm²

RAISED PAVEMENT MARKER 100

Code: BACI ES-100

INSTALLATION

Installation of pavement markers must be with hands, using epoxy glue:

1. Prepare the surface, which must be dry and clean; mark the distribution of each device (9.8 in from center, in staggered formation).
2. Apply epoxy resin on the other side of the device, make sure is totally covered by the glue, specially in corners (approx. 3.5 oz.).
3. Place pavement marker and exert pressure, it doesn't matter glue comes out from the device, this will help to a better fastening.
4. In case of include bolt, drill a borehole with a ½" drill bit to a 3" depth, remove the dust and start from step 2.
5. Let it dry for approximately 2 hours.

How to prepare epoxy resin:

1. Compound equal amounts of "a" + "b" substances.
2. Stir until a homogeneous mixture is obtained.
3. Once you are done, dispose of the epoxy resin residuals (it is for single-use only).

