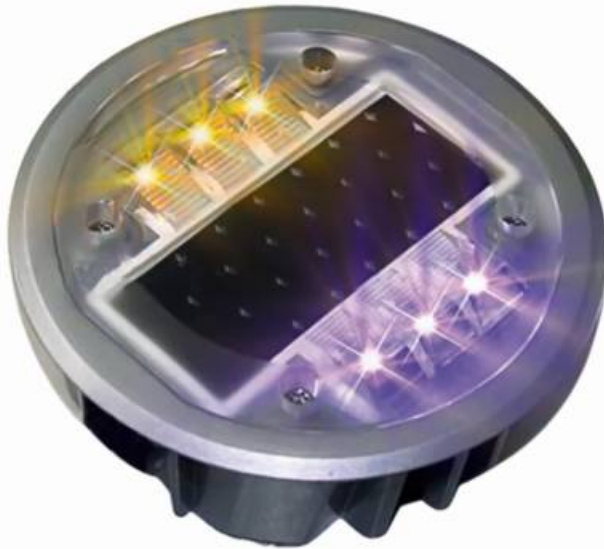


## EMBEDDED ALUMINUM ROAD STUD

Code: V-S-R-A

### FEATURES



- Electronic road stud created to increase visibility of roads in low visibility situations.
- Self rechargeable solar power system, high capacity battery and automatic ignition system.
- Option to be unidirectional, bidirectional or with 3 flashing LEDs per side.
- Embedded on asphalt layer.
- Manufactured in aluminum with polycarbonate lens.
- Ideal to mark a route or guidance, for foggy areas on highways, low light areas, parks, squares and also work as a decoration for community.

### MEASUREMENTS

Dimensions and other measures are nominal and may vary by + - 2 %.

<b>Size</b>	<ul style="list-style-type: none"> <li>• Ø4.7 in X 1.9 in</li> </ul>
<b>Unit weight</b>	<ul style="list-style-type: none"> <li>• 1.5 lb</li> </ul>
<b>Manufactured in</b>	<ul style="list-style-type: none"> <li>• Die cast aluminum</li> </ul>
<b>Solar panel</b>	<ul style="list-style-type: none"> <li>• 2.5V / 180 MAH of monocrystalline silicon</li> </ul>
<b>Storage Device</b>	<ul style="list-style-type: none"> <li>• Two 120F / 2.3V capacitor or NI-MH 1.2V / 600MAH</li> </ul>
<b>Life span</b>	<ul style="list-style-type: none"> <li>• 60 hours for condenser (life span of 5 years)</li> <li>• 180 hours in flashing mode ( life span of 3 years).</li> </ul>



# EMBEDDED ROAD STUD

Code: V-S-R-A

## FUNCTIONS

Flashing (2 Hz $\pm$ 20%) or constant
One or double face
LED color: white, yellow
Visibility: 3280 ft (approx)
Life span: 5 years, with a capacity of 3 years with battery
Working temperature: -30 ~ + 70
Degree of Protection: Ip68
Start-up light intensity: less than 500 lux (can be adjusted upon request)
Load Support: more than 30 tons