

ALUMINUM INTELLIGENT ROAD STUD

Code: VI-AL-12



WHAT'S AN INTELLIGENT ROAD STUD?

Unique visual reference at any road, delineating lanes at any hour.

Maximum visibility and life span, able to withstand the weight of heavy duty vehicles, from motorbikes to trucks.

Pyramid body shaped manufactured in aluminum that provides strength and resistance to road.

Ideal in curved zones, parking lots and two way roads.

FEATURES

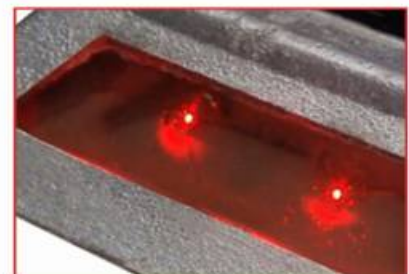
- Resistance to friction, abrasion, shocks and impacts.
- Works as a guidance on road, with great functionality to be used as speed bump.
- Self-rechargeable device, automatic ON at night (when stop receiving sun light), integrated with solar technology.
- Solar panel of greater size that increase light power of LEDs, greater visibility at longer distance.
- Option to be one or two faces for a two way road.

FLASHING LIGHTING SYSTEM

- LED: Ultra bright of 5mm.
- LED Color: white, amber or red.
- LED Quantity: from 1 to 6.
- LED Life Span: 100,000 hrs.
- Light Intensity of each LED: 6500 MCD.
- Flashing Light Sequence: 80 fpm.
- Approximate Visibility Distance: 984 ft

SOLAR POWER SUPPLY SYSTEM

- Mini solar panel: Photovoltaic cell of Silicon of 0.315W/4.4V.
- Long Durability Ecological batteries: NK-MTH.
- Rechargeable of 1.2 Volts 600 mAh.
- Programmable Circuit Efficiency: 24 hrs working with 7 hours under sunlight.



ALUMINUM INTELLIGENT ROAD STUD

Code: VI-AL-12

MEASUREMENTS

Dimensions and other measures are nominal and may vary by + - 2 %.

- | | |
|-----------------------|---|
| Total | <ul style="list-style-type: none">• Length: 4.7 in• Width: 4.7 in• Height: 1.0 in |
| Approx. Weight | <ul style="list-style-type: none">• 1352 gr (47.6 oz) |
| LEDs | <ul style="list-style-type: none">• White, amber or red |

