

## S 81 SPEED BUMP

Code: R-S-81

### WHAT'S AN SPEED BUMP?



The removable speed bump is a device that helps to reduce the speed of drivers on the asphalt surface for temporary events or works; the purpose of this device is to slow down in certain sections of the road.

The main function of this device is to decrease the speed of motorists in a possible police checkpoint or any other circumstance.

Mainly suggested in schools, checkpoints, breathalyzer tests, hospital zones or places where is necessary to slow down.

### FEATURES

- The effectiveness of the R-S-81QP is due to its modular design, reaching the desired or required length.
- Its dynamic shape transforms it into a friendly speed bump for the city.
- Manufactured in polyethylene, material that avoids any damage on vehicles.
- The anti slip surface creates a safer device.
- Resists up to 771,161 lbs.
- Line colors: black and yellow with great durability.
- It has the option to include light.
- For its functionality with light, this is composed by LEDs road stud that provide a greater visibility at night.
- Its easy installation requires anchors (not included).

#### SOLAR ROAD STUD

- Road stud with intelligent solar system.
- Solar panel and highly efficient electronic system.
- LED's in transparent amber or blue color with 30 degree beam angle.
- 3 Hz flashing frequency.



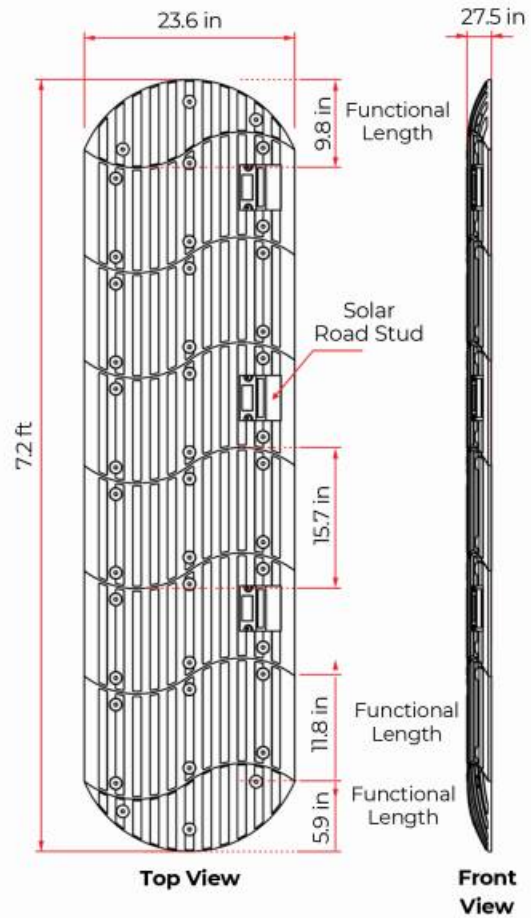
# S 81 SPEED BUMP

Code: R-S-81

## MEASUREMENTS

Dimensions and other measures are nominal and may vary by +/- 2%.

<b>General Measurements</b>	<ul style="list-style-type: none"> <li>Center: 15.7 in x 23.6 in</li> <li>End Caps: 9.8 in x 23.6 in</li> <li>Height: 2.7 in</li> </ul>
<b>Functional Measurements</b>	<ul style="list-style-type: none"> <li>Center: 11.8 in x 23.6 in</li> <li>1 End Cap: 9.8 in x 23.6 in</li> <li>2 End Cap: 5.9 in x 23.6 in</li> </ul>
<b>Reflector</b>	<ul style="list-style-type: none"> <li>Road Studs (optional)</li> </ul>
<b>LED Color</b>	<ul style="list-style-type: none"> <li>Amber or blue</li> </ul>
<b>Approx. Weight</b>	<ul style="list-style-type: none"> <li>Center 15,432 lbs.</li> <li>End Cap 5,511 lbs.</li> </ul>



## INSTALLATION

1. Mark the boreholes with the help of a drill and 1/2" drill bit for concrete, use the speed bump as a guide.
2. Drill the area to a 10" depth.
3. Assemble the speed bump and insert the anchors.
4. Nail the anchors with a 6 lbs mallet, until you reach the bottom.

**Note:** for a better fastening, apply epoxy glue on the anchors.

