

LOW PROFILE BARRIER (NEW JERSEY)

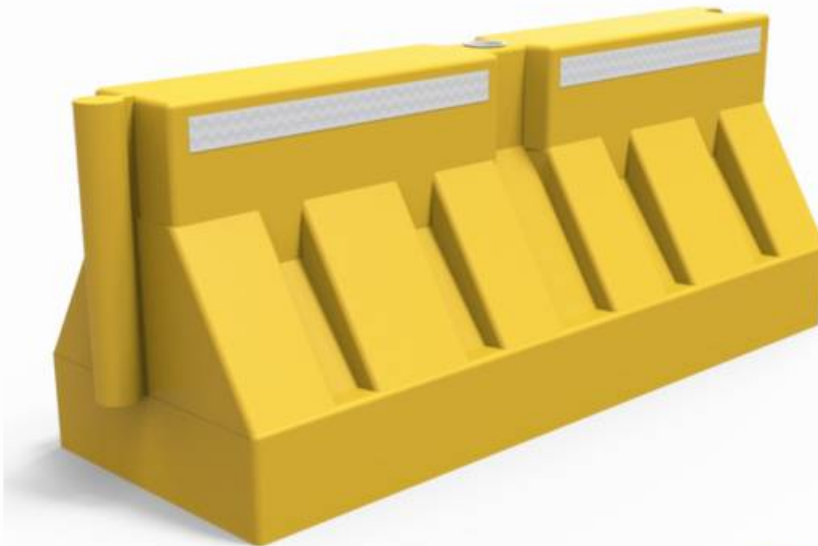
Code: B-1455

FEATURES OF THE LOW PROFILE BARRIER

Traffic barrier for road safety, that functions as a safety barrier.

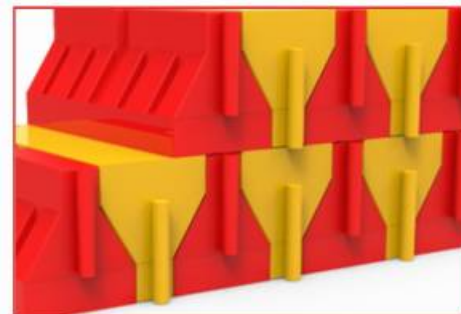
Useful to delimit, sign and cordon off events, providing security.

Ideal to block roads, sign works, change and separate lanes, deviate or guide traffic, as delimit sport activities or events.



ADDITIONAL FEATURES

- Modular system barriers, easy assemble.
- Coupling assembly to create the desired length according to the needs.
- Manufactured in medium density polyethylene by rotomolding process; distinguished for their long-lasting pieces.
- Line colors: red or yellow, other colors upon request.
- With thick walls for an excellent resistance to shocks, specially in borders and edges.
- Long life-span device, resistant to inclemency and temperature changes, with UV-protection.
- Reflective stripes on both sides to increase visibility.
- Upper cap for filling, and lower cap for draining.
- Water-ballast to increase weight and stability if it is required.
- Easy, quick, and safe join.
- Its design allows the perfect packaging, saving transportation and storage costs.



LOW PROFILE BARRIER (NEW JERSEY)

Code: B-1455

MEASUREMENTS

Volumes, dimensions, and other measures are nominal and may vary by approximately 2%.

Measurements

- Total Length: 5.0 ft
- Functional Length: 4.7 ft
- Width: 20.7 in
- Height: 24.0 in

Ballast

- Water or Sand

Approx. weight

- 37.4786 lb

