

ROADWEILER BARRIER

Code: BP-130

WHAT A ROADWEILER BARRIER IS?

This type of barrier is ideal to deviate traffic in construction works, massive events or emergency situations, improving safety of motorists and workers. Their modular and easy installation transform them into a versatile and efficient option for transit management.

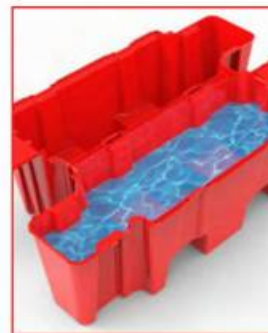
Traffic safety barrier, modern and adaptable one, due can perfectly confine in linear way, curves or quadrilateral shape, easy to move thanks to coupling.

The main function is to cordon off work or prohibited zones, this work to delineate roads safely.



FEATURES

- Modular safety barrier for use in roads and traffic works.
- It allows a 90° turn among barriers, creating quadrilateral shapes according to the project needs. Male-female assembly system, easy to manage by a single person.
- Round corners and borders to minimize injuries in case of impact.
- Option to fill with sand or water on the lower part for greater stability (recommended up to 30% of capacity).
- Lower cap of 3.2 in to ease drainage.
- 90% stackable, saving space during transport and storage.
- 6 front snap locks, and 4 bolts (per corner) to ensure with a safety belt.
- Top space designed to set a lamp.
- Manufactured in high density polyethylene through an injection process, providing resistance to impacts and avoiding deformations.
- Line colors: yellow, red, white or grey.
- Protection against UV-rays and climate changes.
- Designed to manage with forklift.
- It allows water flow if rains, avoiding accumulations.
- Option to create a **5 barriers-convoy with metal structure for extended use.**



Filled with water



Filled with sand



Usage with forklift



Area for light

ROADWEILER 130 BARRIER

Code: BP-130

MEASUREMENTS

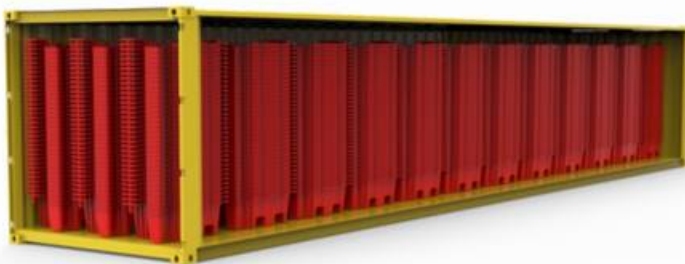
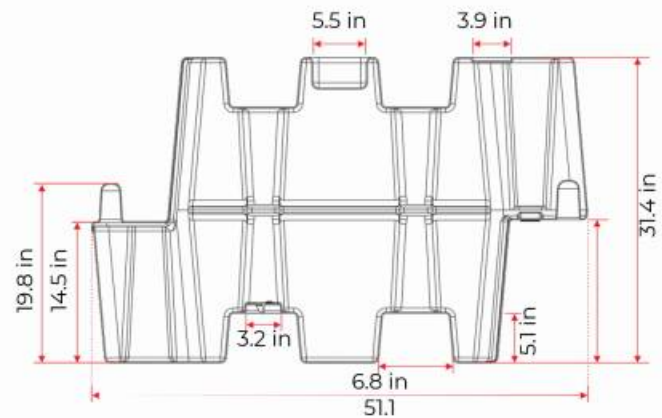
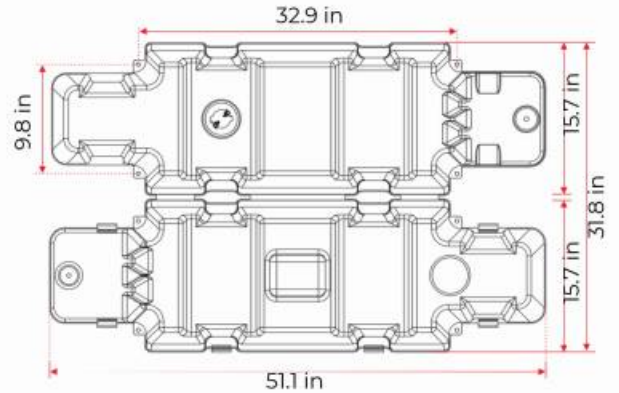
Dimensions and other measures are nominal and may vary by +/- 2%.

Total

- Length: 51.1 in
- Width: 15.7 in
- Height: 31.4 in

Ballast

- Water or sand



Cubic capacity

- 20 ft container = 385 Barriers
- 40 ft container = 805 Barriers
- 48 ft container = 1,050 Barriers
- 53 ft container = 1,260 Barriers



ROADWEILER CONVOY

Code: BP-130



FEATURES

- Convoy to confine roads.
- Trolley to mount 5 barriers.
- Structure manufactured in a 3x3" steel angle, with 6 swivel casters (brake pedal) of 8" diameter to move barriers.
- 21.3 ft length.

