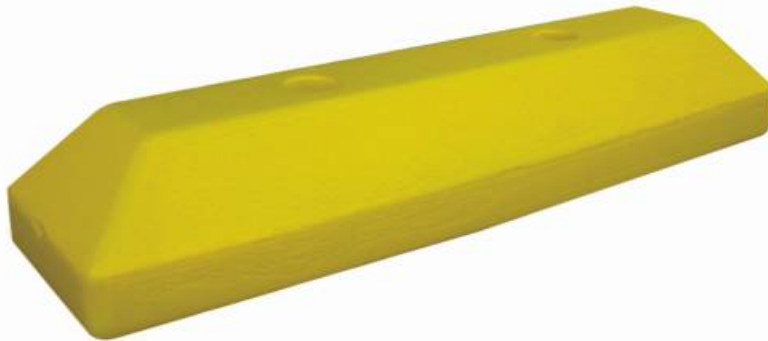


PARKING STOP 51 Polyethylene Parking Stop

Code: TPES-S-51

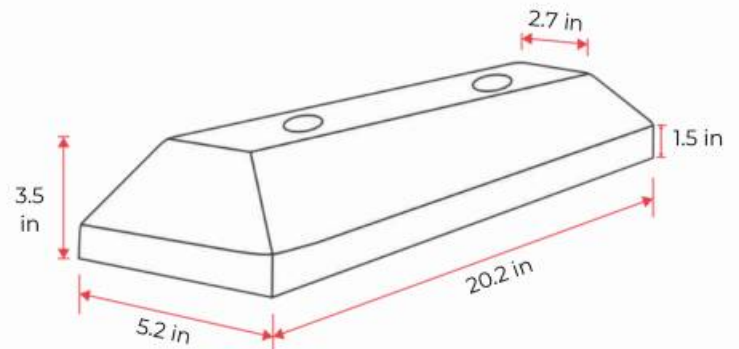
FEATURES



- Special for counterflow lanes and parking stops.
- Channelizer for heavy and light traffic.
- It is anchored with embedded rods in epoxy resin.
- Resist impacts and working tread pressure.
- UV protection.
- Design that allows an easy transport due its light weight.
- With smooth surface, round borders and without cutting edges.
- For its installation is necessary two nails and epoxy glue.

MEASUREMENTS

Dimensions and other measures are nominal and may vary by + / - 2%.



Total

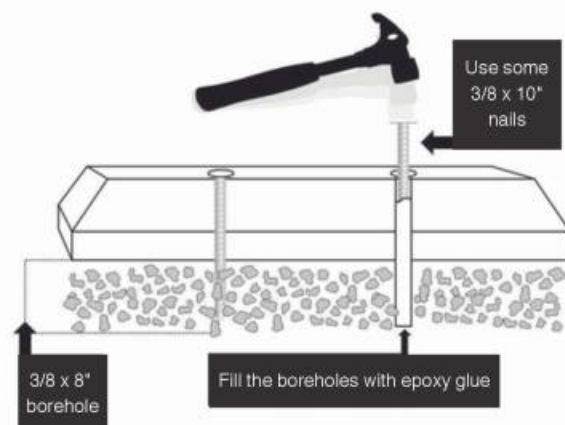
- Length: 20.2 in
- Width: 5.2 in
- Height: 3.5 in

Weight

- 2976.241 lbs.

Manufactured in

- High density polyethylene



PARKING STOP 51

Polyethylene Parking Stop

Code: TPES-S-51

TECHNICAL SPECIFICATIONS

**Tensile Strength at Yield Point
(ASTM D 638)**

- 17.3 mpa

**Tensile Strength at Breaking
Point (ASTM D638)**

- 27.2 mpa

**Yield Point Elongation
(ASTM D 638)**

- 17.4 %

**Elongation at Break
(ASTM D 638)**

- 1 500 %

**Flexural Modulus
(ASTM D 638)**

- 610 mpa

**Impact Strength Izod
(ASTM D 256)**

- 530 j/m

**Tensile Impact Strength
(ASTM D 1822)**

- 163 kj/m²

Impact 40°C (104 °F), 3.2 mm

- 23 900 j/m

**Softening Point
(vicat) (ASTM D 1525)**

- 113°C or 235°F

**Heat Deflection Temperature
(ASTM D 648)**

- 80°C or 176°F