

VANDAL PROOF 770 LUMINAIRE

Code: LUM-770 ANTIVANDALICA



WHAT'S A VANDAL-PROOF STREET SIGN?

The perfect duo between street sign and luminaire.

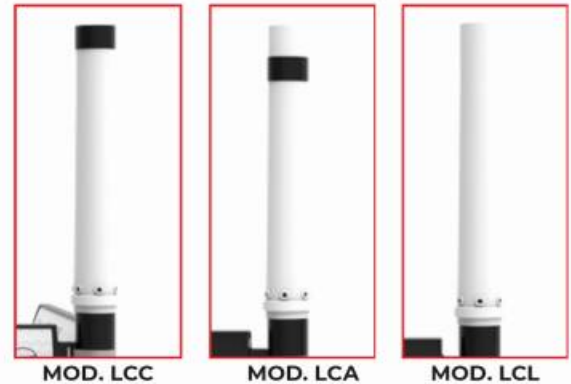
Group that indicate users the name, road type or demarcation where is, way of circulation, and in some cases, street, avenues, house numbering and others.

Duo built in materials specially developed to satisfy the maximum demands of resistance of external agents and vandalism of public lighting.

Geolocation with QR code for emergencies of safety (optional).

FEATURES

- Body of street sign manufactured in black RCB, lightweight polymer and in a single piece with two integrated slots to fasten to post. Curved front allow the application of any flexible film to label both sides.
- Luminaire designed in a single piece of white polymer, allowing light transmission efficiently.
- Street sign and luminaire create a vandal-proof and anti-graffiti combination, with low energy consumption and high performance, reducing installation costs.
- High resistance to inclemency, temperature changes, UV protection.
- It doesn't rusts and it has a long life span.
- 100% recyclable and resistant to vandalism.
- Street sign is installed with steel strips while luminaire uses galvanized screws.
- Suitable for 16-gauge 4" pipes, with plate of 1/4" of 11.8x11.8 in for existent posts.
- Finishes in black color with electrostatic painting for greater durability.



INSTALLATION WITH SLOTS

ELECTRIC SYSTEM

- LED with low electric energy consumption, ecofriendly due is 100% recyclable.
- ON/OFF through photoelectric electronic sensor.

VANDAL PROOF 770 LUMINAIRE

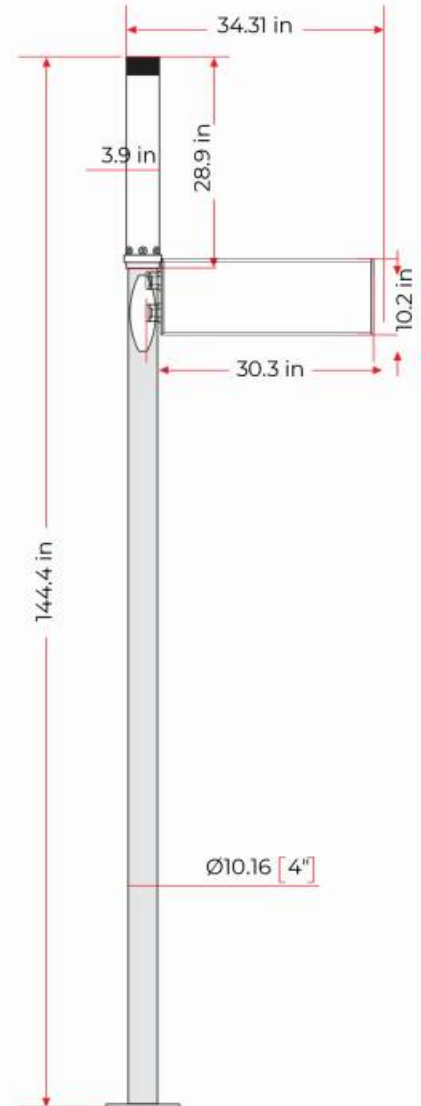
Code: LUM-770 ANTIVANDALICA

MEASURES

Dimensions and other measures are nominal and may vary by + - 2%.

- Total**
 - Total Length: 30.3 in
 - Width: 3.5 in
 - Height: 10.2 in
- Luminaire**
 - Diameter: 3.9 in
 - Height: 28.9 in
- Post Height**
 - Upon request

LED Module in line array	50 W Chip Led/
Input Voltage	100-240 V
Consumption Power	50.5 W
Average hour span	50 000 hours
Lumen	4500
Electronic Control	Instantaneous Photoelectric
Protection degree	IP65
Protection degree	IK10
Color temperature	6000-6500K



	Mod. LCC/LCA/LCL 50 W	Mod. LCC/LCA/LCL 30W
Lighting	Yes	Yes
Power	50 W	30 W
Lumen	4500	2700
Color	Translucent White	Translucent White
Color Temperature	6000-6500k	6000-6500k
LED Module	50 W CHIP LED	30 W CHIP LED
Photoelectric Sensor	Yes	Yes

