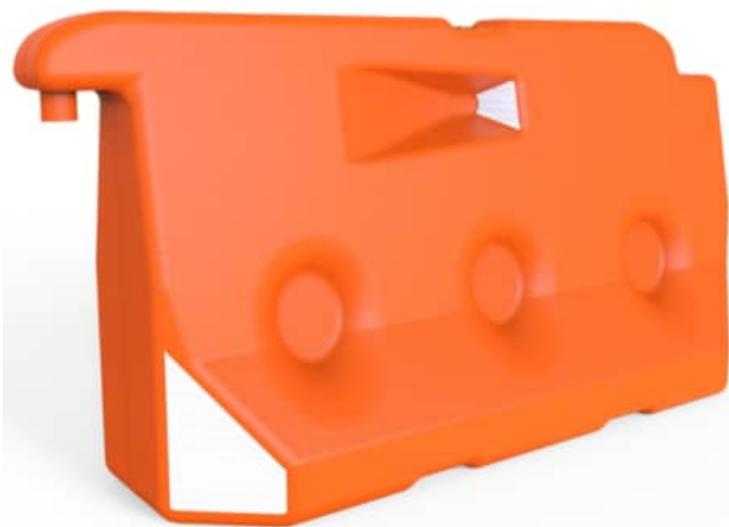


S-2016 BARRIER

Code: S-2016



WHAT'S A S-2016 BARRIER?

Modern and versatile traffic safety barrier that can be filled with water, sand or can be used empty; easy to handle.

Ergonomic design conformed in one piece.

Its usage is mainly suggested in rows, contributing to a safer environment.

FEATURES

- Useful to delimit, sign and provide security in work zones.
- Blow-molding in high molecular weight polyethylene.
- Manufactured in one piece, with long shelf life.
- Resistant to inclemency; with UV protection.
- Round borders to avoid injuries in case of impact.
- Increase weight and strength, filling with water or sand (optional).
- Assembly system allows to join various barriers through a lock to maintain them together, maximizing safety and protection.
- On the sides, have inner angular shapes with reflective tape for better visibility.
- 1 embedded reflective trapezoid, directed to motorists vision, visible at long and short distances.
- Base with 2 arcs that facilitate water flow and also used to carry with forklift.



S-2016 BARRIER

Code: S-2016

MEASUREMENTS

Dimensions and other measures are nominal and may vary by $\pm 2\%$.

Total

- Length: 5.5 ft
- Width: 22 in
- Height: 33.8 in

Reflective Tape

- Engineer Grade Prismatic (Optional)

Color of Reflective Tape

- White

Front View



Lateral View

