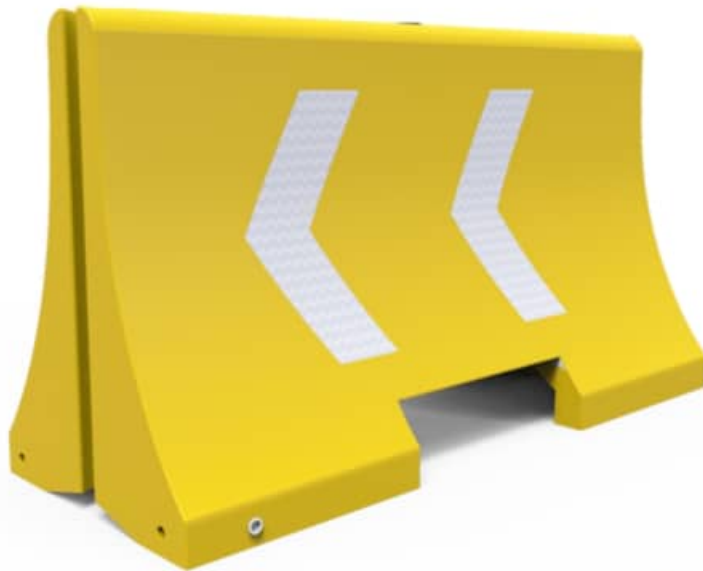


PLASTIC JERSEY BARRIER

Code: B-2001



WHAT'S A PLASTIC JERSEY BARRIER?

Road safety barrier, that functions as a fence for protection.

The main features are to protect work zones, guide traffic flow, delimit, sign and cordon off areas, providing security to pedestrians and drivers.

Perfect to obstruct roads, sign works, separate lanes, deviate and delimit in sport activities or events.

FEATURES

- Robust barriers with stable and strong body, easy to handle.
- Its number and placement depends on the type of road and work that is performing.
- Manufactured in medium density polyethylene in orange or yellow, other colors upon request.
- Uniformity in the thickness of its walls, providing a better performance in everyday use; comply with the official standards of design, size, and functionality.
- Long-lifespan device, resistant to inclemency and temperature changes, with UV protection.
- Suitable for water ballast or sand ballast, increasing stability.
- Upper cap for filling, can be changed for an arrow-type cap, increasing visibility and a lower cap for draining.
- Barrier can be easily, safely and quickly joined with a minimum effort.
- Reflective is added for a better visibility on highways (optional).
- The system of its base allows the passage of water.
- Option to include a vertical panel to improve visibility at night.



PLASTIC JERSEY BARRIER

Code: B-2001

MEASUREMENTS

Volumes, dimensions and other measures are nominal and may vary by approximately 2%.

Measurements

- Total Length: 5.3 ft
- Functional Length: 5.0 ft
- Width: 23.4 in
- Height: 33.4 in

Color of reflective

- White

Approx. weight (empty)

- 39.6832 lb

